

## Child Development Center Referral Guide

The Child Development Center (CDC) is an **evaluation clinic** serving children up to 18 years of age with developmental concerns. We also treat some children following their diagnoses.



### Common problems or concerns evaluated:

- Slow meeting of developmental milestones
- Delayed speech or language development
- Cognitive delay and learning problems
- Attention or memory problems
- Psychological and developmental concerns secondary to trauma
- Behavioral or emotional difficulties due to developmental or learning problems
- Evaluation of children adopted from other countries
- Autism
- Selective autism

### Concerns and services **not** treated or provided by the CDC include:

- Autism-specific therapy (ABA)
- Care for severe and pervasive mental disorders
- Constipation
- Nutritional concerns/feeding difficulties
- Genetic counseling
- Neonatal follow-up before age 3 for babies who have been in the NICU
- Neuropsychological testing
- Psychiatry
- Sleep disturbances
- SSI evaluations



### Treatment plans are specific to each child and can include:

- Speech/language therapy
- Medication management for ADHD and anxiety
- Referral back to school district with new information or recommendations
- Referrals to other specialists
- Psychological (behavioral) therapy to address emotions and behaviors that are secondary to developmental delays and interfere with a child's functioning (limited availability)



### Our team consists of:

Psychologists, speech-language pathologists and medical providers. Children may see any combination of providers, depending on their presenting concerns.

Families can request an appointment by calling **(414) 266-3339**.

## More information

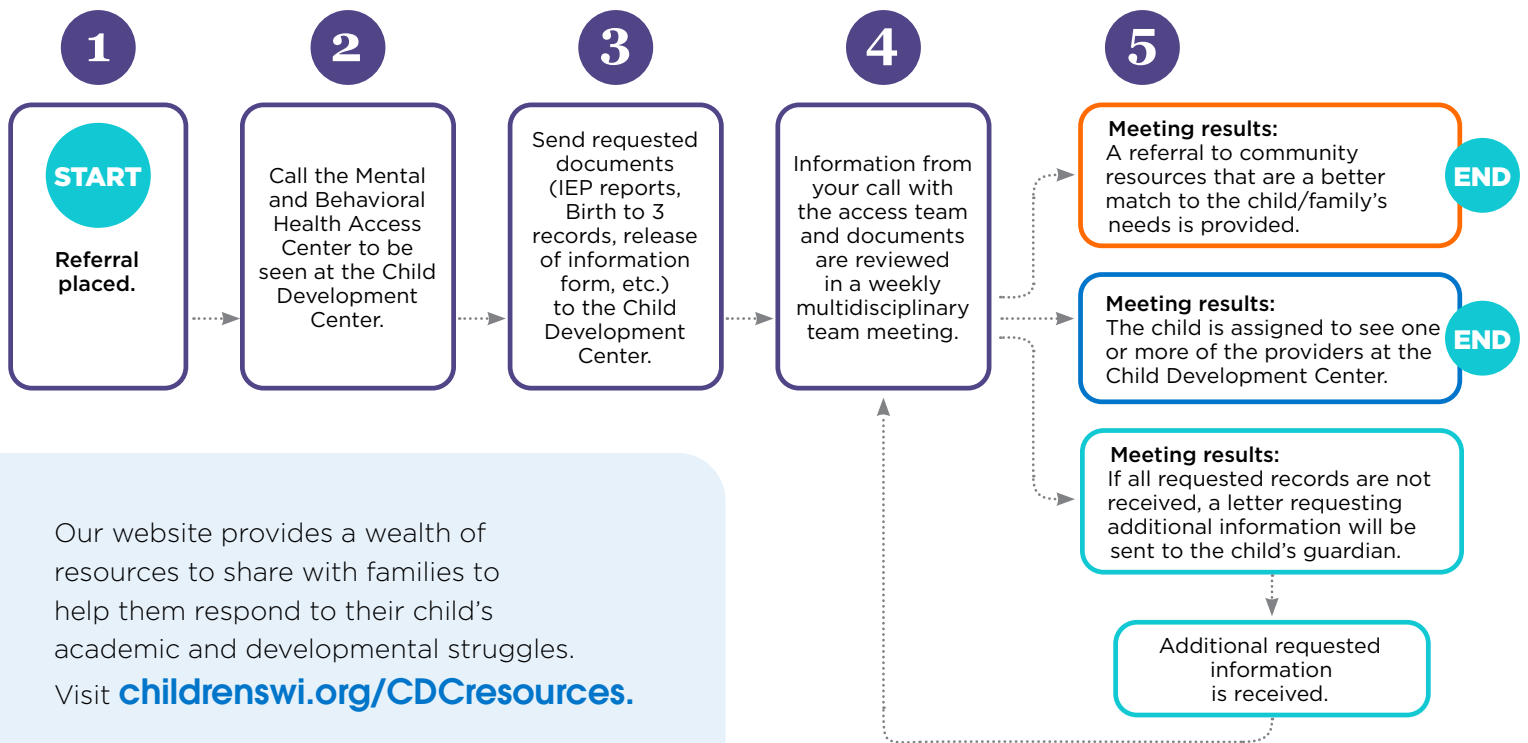
### Making an appointment

- Families should call the Mental and Behavioral Health Access Center at (414) 266-3339.
- The CDC does not require a physician referral to see a patient, unless a referral is required by insurance.
- Physicians may enter a referral order in Epic, or fax referral information to us at (262) 432-6604. See flowchart on referral process.
- To ensure each child receives the evaluation and care he/she needs in order to reach his/her optimal potential, we carefully review the information families share with us. **If we are not an appropriate referral for a patient, we always provide the family with resources that are a better fit for the patient.**
- Wait times for services vary. Families will be informed of wait times for services determined to be a fit for their child.

### Meeting patients' needs

- If you have questions regarding the appropriateness of a referral to our clinic, we welcome your calls and emails. Contact Lisa Meder, CDC Practice Manager, at (262) 432-6618, lmeder@mcw.edu, or Sarah Rysdyk, PsyD, Clinical Psychologist, at (262) 432-6606, srysydk@mcw.edu. If you are part of the Children's Wisconsin system, we ask that you submit your question in an eConsult. If it is determined that we are not an appropriate referral for your patient, we will provide you with resources that are a better match.
- If your patient is struggling with a more immediate need (expulsion from school, needing ADHD medication right away), please seek more readily available behavioral therapy or pediatrician resources in addition to requesting an evaluation at the CDC. We are unable to accommodate short-notice appointments for new patients.
- Our psychologists will review all information provided by families and will determine the most appropriate course for answering their questions and addressing their concerns for their child. Not all questions require the use of psychological assessments; sometimes, we can answer families' questions by sitting down with them and their child for a thorough interview and review of past evaluations and current services.

## Referral Process for Child Development Center



Our website provides a wealth of resources to share with families to help them respond to their child's academic and developmental struggles. Visit [childrenswi.org/CDCresources](https://childrenswi.org/CDCresources).